

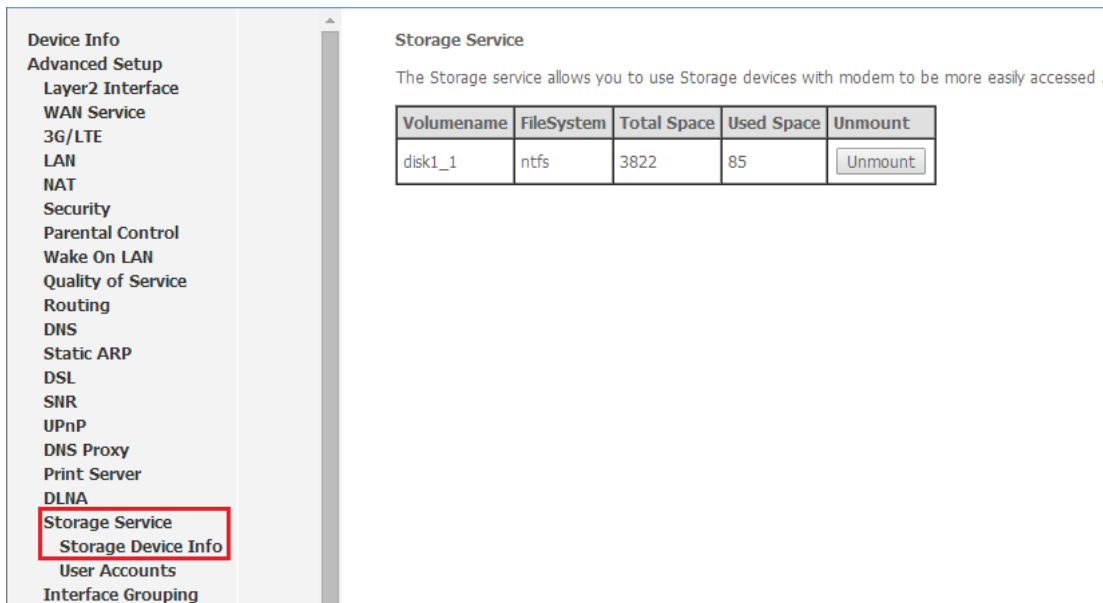
USB Storage support on EAV510 series (FTP & SAMBA Application)

This user guide will help you understand how to use FTP and SAMBA application with the USB storage.

Storage format support: ext2, ext3, ext4, FAT, FAT32 and NTFS.

Storage Device Info

The USB storage information can be found at **Advanced Setup -> Storage Service -> Storage Device Info** when you plug in the USB storage.



Storage Service

The Storage service allows you to use Storage devices with modem to be more easily accessed .

Volumename	FileSystem	Total Space	Used Space	Unmount
disk1_1	ntfs	3822	85	<input type="button" value="Unmount"/>

Volumename: The name of USB storage in system. It is must information for creating FTP/SAMBA user account.

FileSystem: The type of your storage format. (ext2/ext3/ext4/fat/fat32/ntfs)

Total Space: The disk size of your storage. Unit is MB.

Used Space: The used space of your storage. Unit is MB.

Unmount: It is highly suggested to click **Unmout** button when you want to unplug the USB storage in order to prevent any damage of your USB device.

Note: If your storage device information is not shown here, please check your storage format.

User Accounts

The EAV510 has user access right protection for storage function. You must create the user account before using it.

Advanced Setup -> Storage Service -> User Accounts

Storage User Account Configuration

Choose Add, or Remove to configure User Accounts.

Username	HomeDir	Remove
----------	---------	--------

Click the **Add** button to add a new user account.

Storage User Account Setup

In the boxes below, enter the user name, password and volume name on which the home directory is to be created.

Username:

Password:

Confirm Password:

Volumename:

- Username:** The name for user account.
- Password:** The password for user account.
- Confirm Password: Type the password you set again to prevent any typo.
- Volumename:** The name of USB storage. This information can be found at **Storage Device Info**, The EAV510 can support USB HUB to have multi USB storage plugged and use this information for the mapping between user and multi USB storage.

Click **Apply/Save** button to finish the user account setting.

Storage User Account Configuration

Choose Add, or Remove to configure User Accounts.

Username	HomeDir	Remove
test	disk1_1/test	<input type="checkbox"/>

The system will create a new folder and use username as folder name. This is also the Home Directory for the user.

Note: The administration account (admin) is system default account which can see the root directory and all user's folder on USB storage.

Remove User

Make Remove checkbox checked and click **Remove** button to remove the user.

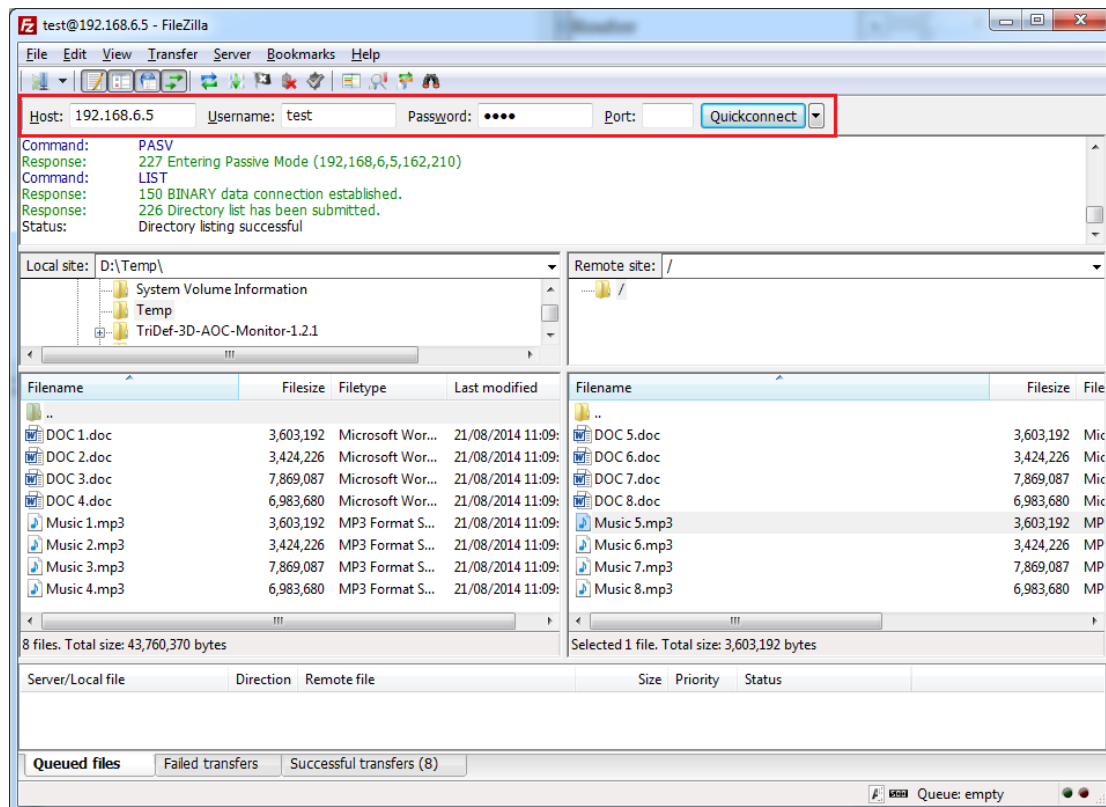
Storage User Account Configuration

Choose Add, or Remove to configure User Accounts.

Username	HomeDir	Remove
test	disk1_1/test	<input checked="" type="checkbox"/>

FTP Application

You can use any FTP client application that supports the standard FTP protocol to access to the storage. We use FileZilla as example here.



Host is your EAV510's LAN IP address, if you want to access it from Internet, please go to **Management -> Access Control -> Services** to enable FTP service.

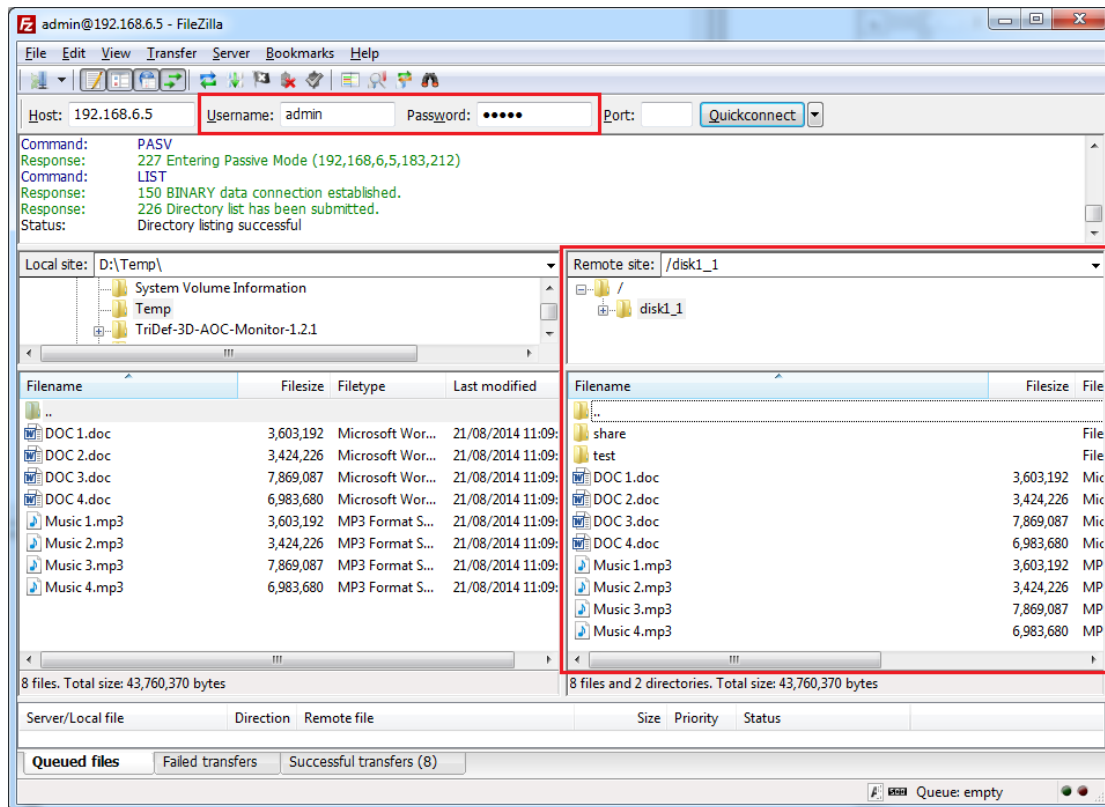
Access Control -- Services

A Service Control List ('SCL') enables or disables services from remote access.

- ☒ Enable FTP service
- ☐ Enable HTTP service
- ☒ Enable ICMP service
- ☐ Enable SNMP service
- ☐ Enable SSH service
- ☐ Enable TELNET service
- ☐ Enable TFTP service

Save/Apply

If you use administration account to login to the device, you have access right to read/write all contents on USB storage.



SAMBA

Open Windows Explorer and type the path [\\192.168.6.5](http://192.168.6.5) in address bar. The IP address 192.168.6.5 is EAV510's LAN IP address. Then you can see a Network Driver named "public", double click on it and enter the user account you set or use administration account to login.

Example with administration account as below.

