

TW-LTE cat 6 USB modem

# **LTE&5G Windows USB Driver Installation Guide**

**LTE&5G Module Series**

Rev. LTE&5G\_Windows\_USB\_Driver\_Installation\_Guide\_V2.1

Date: 2019-07-08

Status: Released



## **GENERAL NOTES**

Company OFFERS THE INFORMATION AS A SERVICE TO ITS CUSTOMERS. THE INFORMATION PROVIDED IS BASED UPON CUSTOMERS' REQUIREMENTS. Company MAKES EVERY EFFORT TO ENSURE THE QUALITY OF THE INFORMATION IT MAKES AVAILABLE. Company DOES NOT MAKE ANY WARRANTY AS TO THE INFORMATION CONTAINED HEREIN, AND DOES NOT ACCEPT ANY LIABILITY FOR ANY INJURY, LOSS OR DAMAGE OF ANY KIND INCURRED BY USE OF OR RELIANCE UPON THE INFORMATION. ALL INFORMATION SUPPLIED HEREIN IS SUBJECT TO CHANGE WITHOUT PRIOR NOTICE.

## **COPYRIGHT**

THE INFORMATION CONTAINED HERE IS PROPRIETARY TECHNICAL INFORMATION OF Company WIRELESS SOLUTIONS CO., LTD. TRANSMITTING, REPRODUCTION, DISSEMINATION AND EDITING OF THIS DOCUMENT AS WELL AS UTILIZATION OF THE CONTENT ARE FORBIDDEN WITHOUT PERMISSION. OFFENDERS WILL BE HELD LIABLE FOR PAYMENT OF DAMAGES. ALL RIGHTS ARE RESERVED IN THE EVENT OF A PATENT GRANT OR REGISTRATION OF A UTILITY MODEL OR DESIGN.

# About the Document

## History

Revision	Date	Author	Description
1.0	2017-11-14	Hunter LV/ Joy WANG	Initial
2.0	2018-12-24	Isaac WANG	<ol style="list-style-type: none"><li>1. Added the applicable modules EM06, EM12, EG12 of this document.</li><li>2. Modified some screenshots of driver installation. (Figure 1, 4, 7, 9, 10, 16)</li></ol>
2.1	2019-07-08	Isaac WANG	<ol style="list-style-type: none"><li>1. Added applicable modules EM05, EG18, EM20, BG95, AG35, AG15, AG520R, RG500Q of this document. Please refer to Table 2 for details.</li><li>2. Updated all the screenshots of USB driver installation and uninstallation except Figure 8. (Chapter 2 and 3).</li></ol>

## Contents

About the Document .....	2
Contents .....	3
Figure Index .....	4
<b>1 Introduction .....</b>	<b>5</b>
1.1. Applicable Modules .....	5
<b>2 Installation of USB Driver.....</b>	<b>6</b>
2.1. Preparation .....	6
2.2. Installation Procedures.....	8
2.3. Test .....	12
<b>3 Uninstallation of USB Driver .....</b>	<b>14</b>
3.1. Uninstallation Procedures .....	14

## Figure Index

FIGURE 1: "DEVICE MANAGER" INTERFACE OF WINDOWS SYSTEM WITHOUT INSTALLATION.....	7 FIGURE
2: CHECK INSTALLATION SETTING.....	8 FIGURE
3: CHOOSE DESTINATION LOCATION .....	9 FIGURE
4: COPYING FILES .....	9 FIGURE
5: AUTOMATIC INSTALLATION .....	10 FIGURE
6: COMPLETE INSTALLATION .....	11 FIGURE
7: CHECK USB DRIVER INSTALLATION RESULT .....	12 FIGURE
8: MODULE TESTING VIA QNAVIGATOR (TAKE BG96 AS AN EXAMPLE) .....	13 FIGURE
9: CHOOSE THE INSTALLED USB DRIVER.....	14 FIGURE
10: UNINSTALL THE USB DRIVER .....	15 FIGURE
11: CHECK UNINSTALLATION SETTING.....	15 FIGURE
12: CONFIRM UNINSTALLATION .....	16 FIGURE
13: AUTOMATIC UNINSTALLATION .....	16 FIGURE
14: REMOVING FILES .....	16 FIGURE
15: COMPLETE UNINSTALLATION.....	17 FIGURE
16: CHECK USB DRIVER UNINSTALLATION RESULT .....	18

# 1 Introduction

This document illustrates how to install USB driver for LTE and 5G modules on Windows operating systems, with provided installation package.

The installation package (*LTE&5G\_Windows\_USB\_Driver*) supports Windows 7, 8 and 10 operating systems. This document introduces the installation procedure on Windows 10 system as an example.

## 1.1. Applicable Modules

The document is applicable to the following LTE and 5G modules.

**Table 1: Applicable Modules**

Module Series		Models
LTE	LTE Standard	<ul style="list-style-type: none"> <li>● EC2x: EC21/ EC25/ EC20 R2.0/ EC20 R2.1</li> <li>● EG9x: EG91/ EG95</li> <li>● EM05</li> </ul>
	LTE-A	<ul style="list-style-type: none"> <li>● Ex06: EG06/ EP06/ EM06</li> <li>● Ex12: EG12/ EM12</li> <li>● EG18</li> <li>● EM20</li> </ul>
	LPWA	<ul style="list-style-type: none"> <li>● BGxx: BG96, BG95</li> </ul>
	Automotive	<ul style="list-style-type: none"> <li>● AGxx: AG35/ AG15/ AG520R</li> </ul>
5G		<ul style="list-style-type: none"> <li>● RG500Q</li> </ul>

## 2 Installation of USB Driver

This chapter mainly describes how to install USB driver for LTE and 5G modules with the provided installation package.

### 2.1. Preparation

Before USB driver installation, please connect the module to PC via USB cable first and then press power key to power up the module. If customers have never installed any driver on their system before, there would be a prompt about new device which indicates them to update the drivers. Please ignore the prompt and go to the next step.

The figure below shows the “Computer Management” → “Device Manager” interface of Windows system that has never installed drivers.

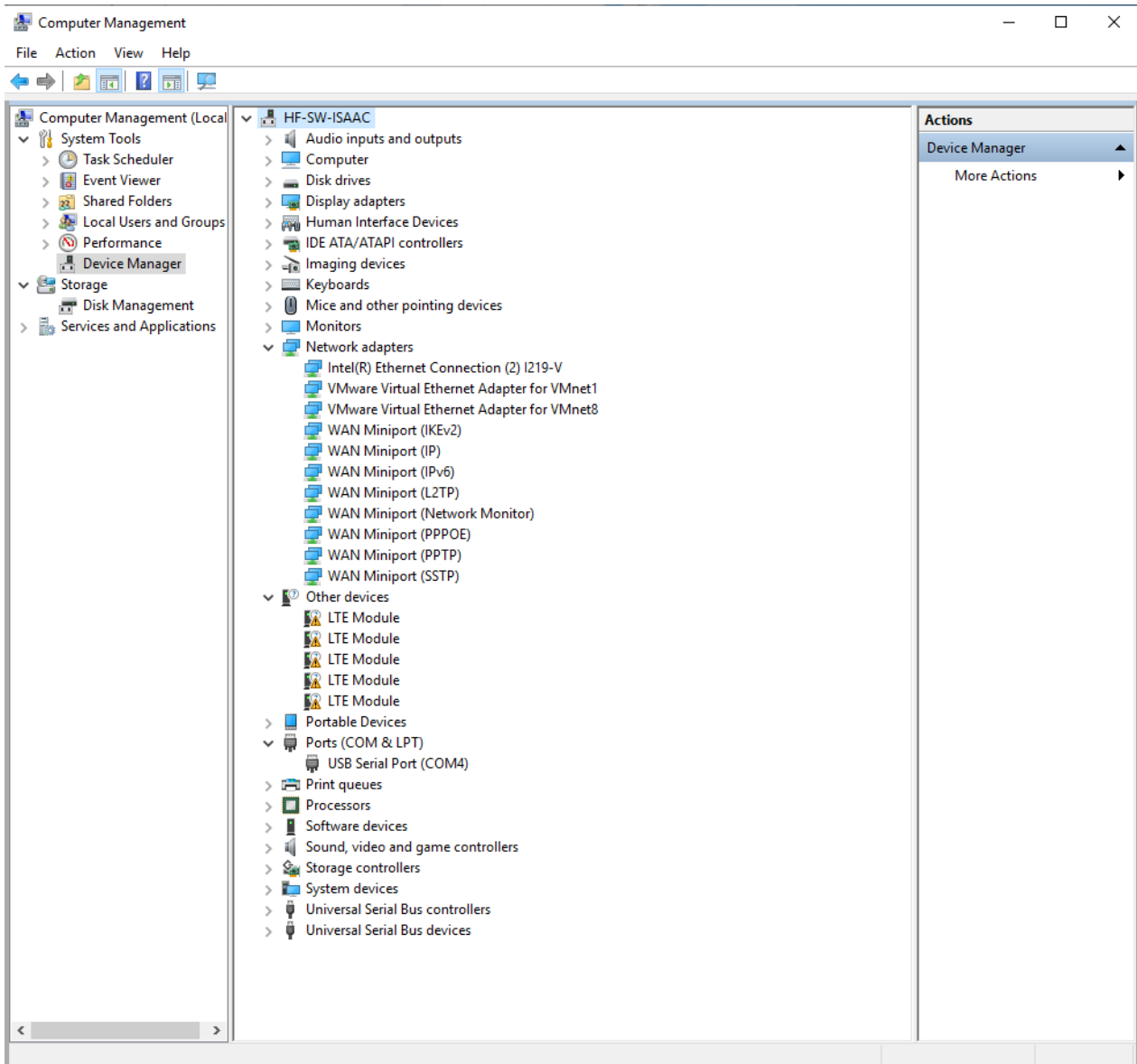


Figure 1: “Device Manager” Interface of Windows System without Drivers Installation

**NOTE**

For Windows XP system, customers MUST ensure that the module has been connected to PC before USB driver installation.



## 2.2. Installation Procedures

Before USB driver installation, please get the latest installation package. This document takes the installation of *LTE&5G\_Windows\_USB\_Driver\_V2.1* as an example, and the details are shown as below.

### 1. Check Installation Setting

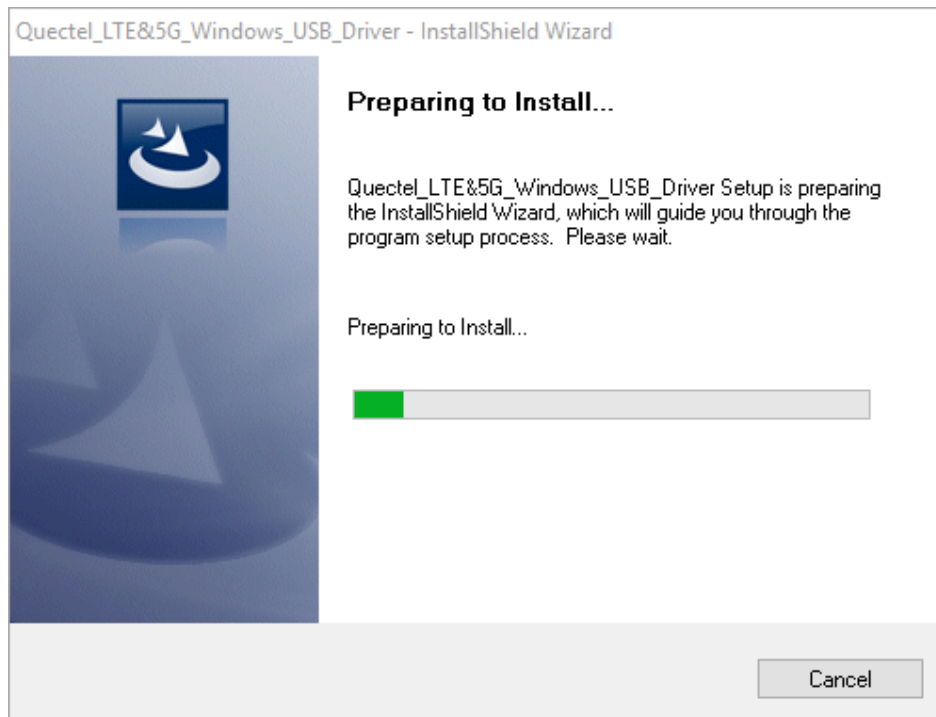


Figure 2: Check Installation Setting

### 2. Choose Destination Location

If customers do not want to change the default location for USB driver installation, please click **“Next”** directly to continue.

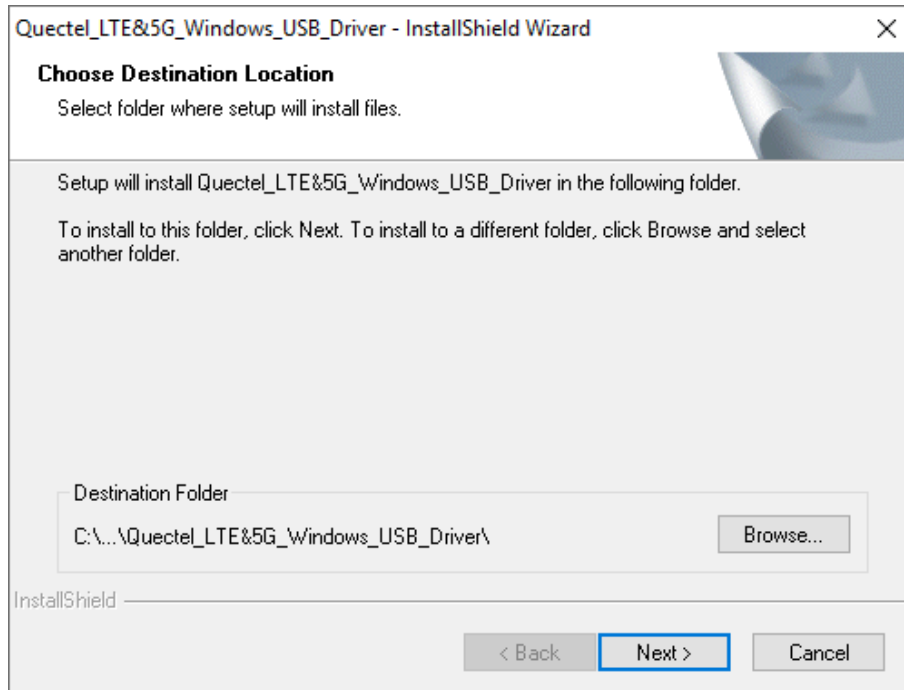


Figure 3: Choose Destination Location

### 3. Prepare Driver Files Needed for Installation

When the following interface is shown, please click “**Next**” to move on to the next step.

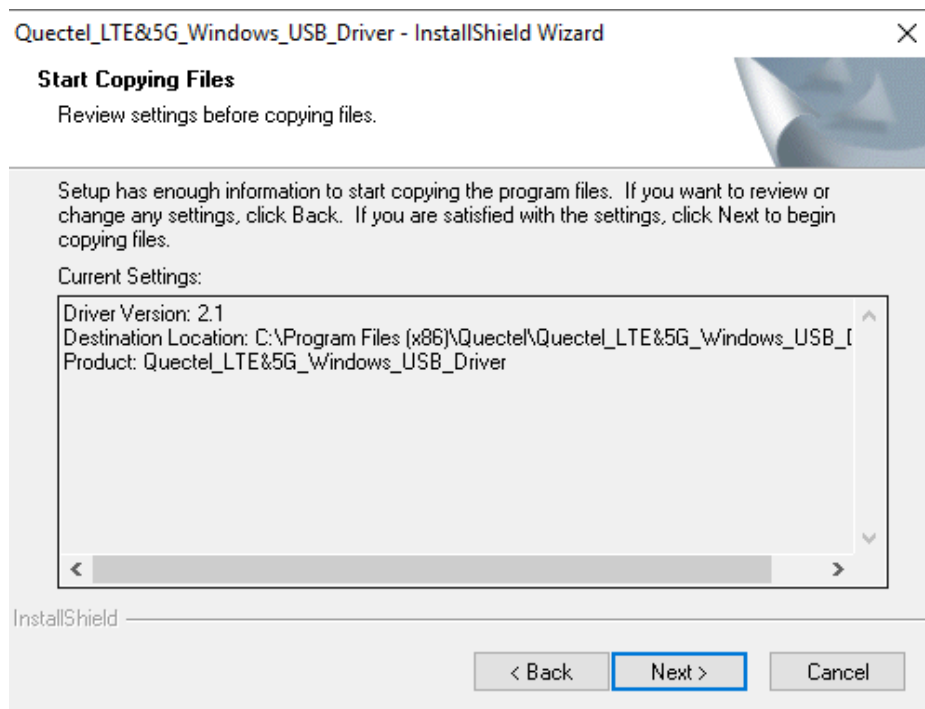


Figure 4: Copying Files

#### 4. Automatic Installation

It may take some time to install the driver, please wait patiently for the process to complete.

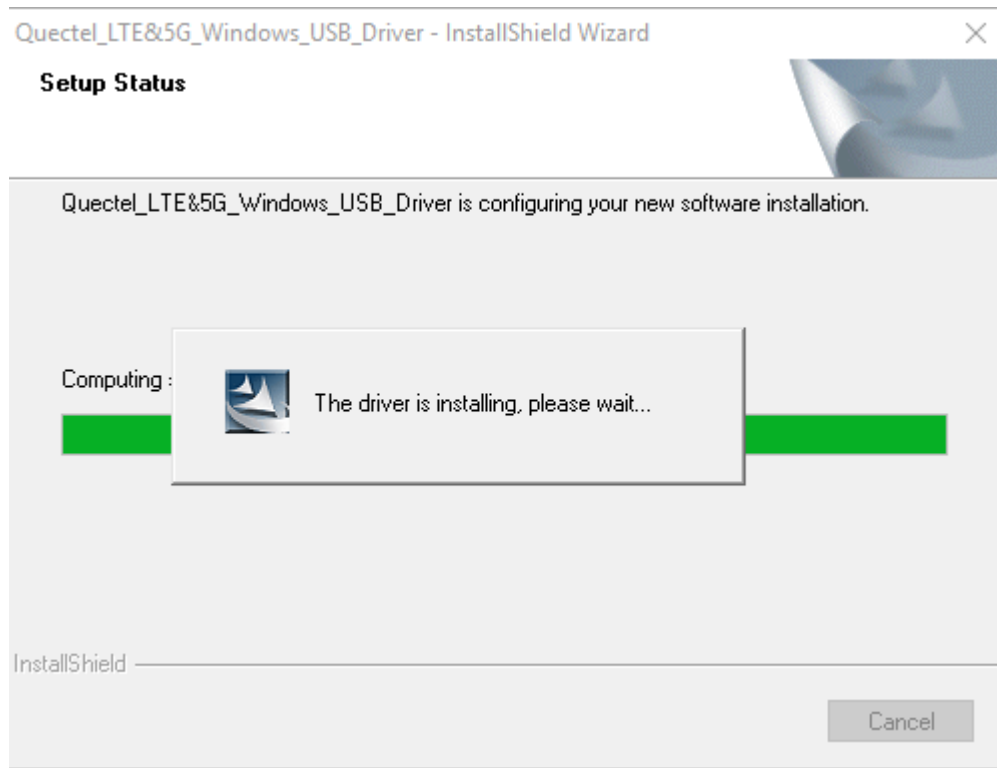
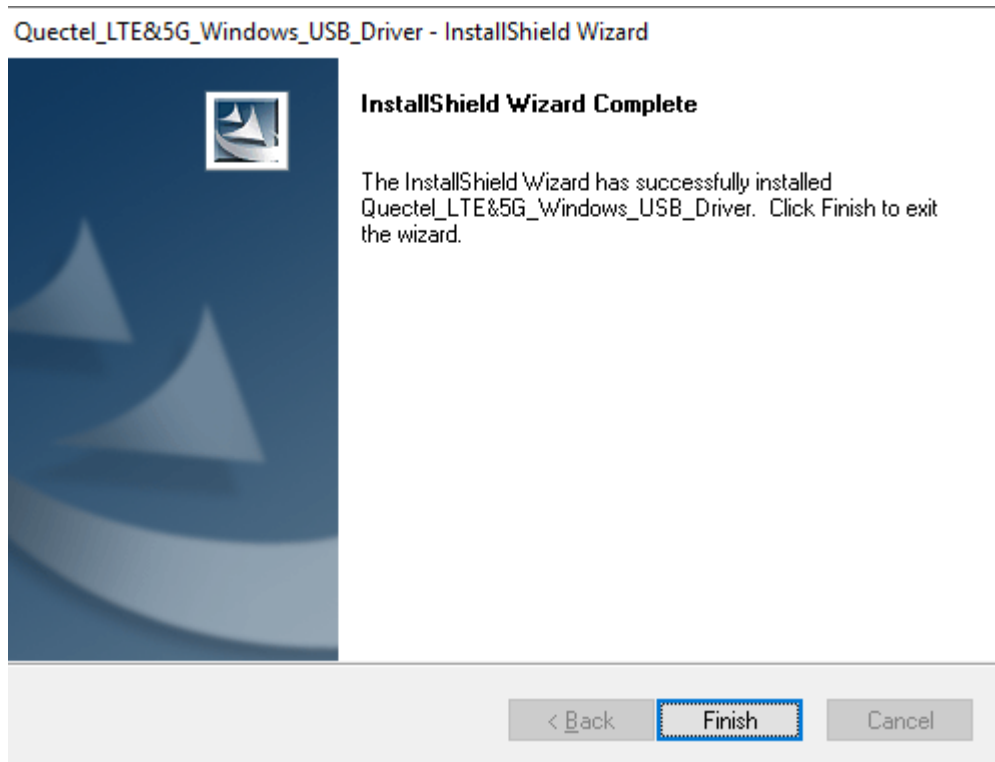


Figure 5: Automatic Installation

#### 5. Complete Installation

When the following interface is shown, it indicates the driver has been installed successfully. Click **"Finish"** to complete the installation.



**Figure 6: Complete Installation**

After successful installation, customers can check the installation result through “Computer Management” → “Device Manager”.

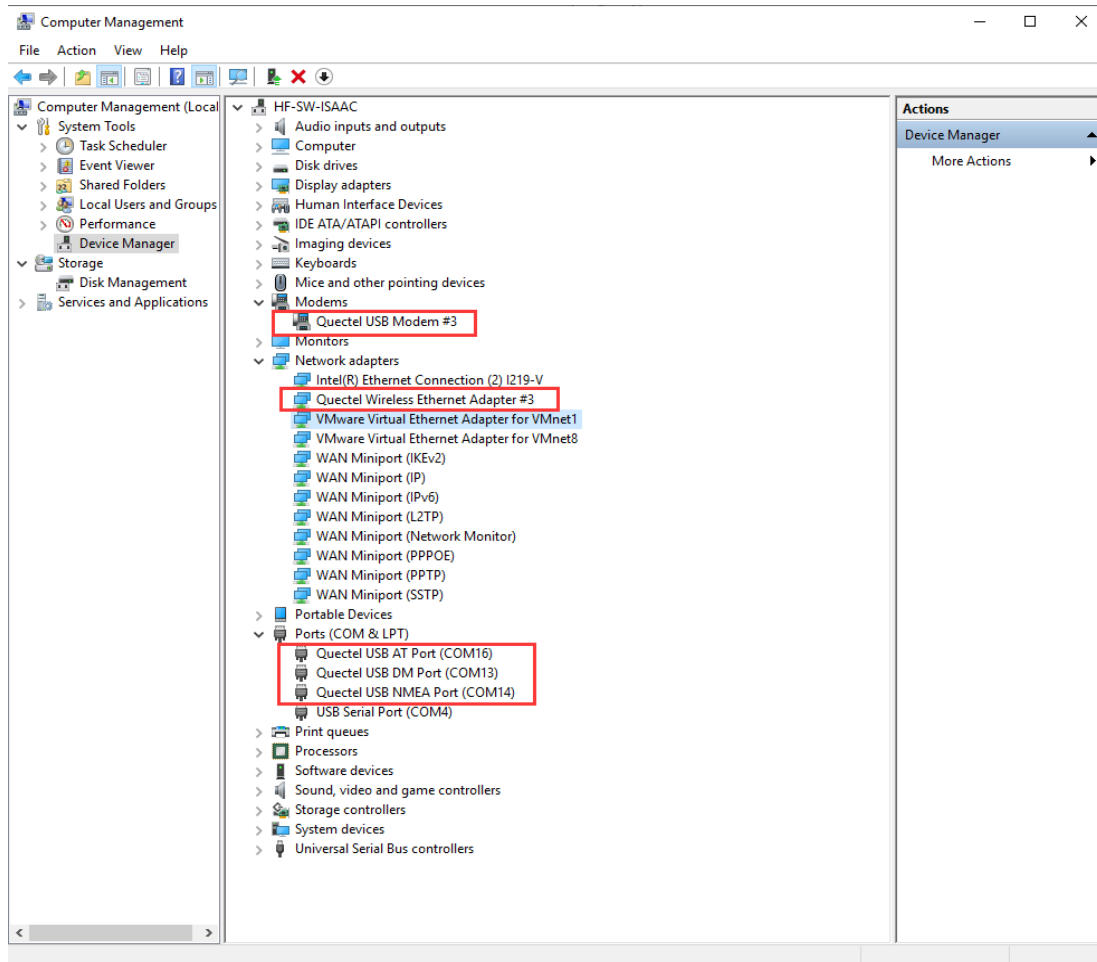


Figure 7: Check USB Driver Installation Result

## 2.3. Test

After the USB driver has been installed, customers can test whether the driver can work normally or not by QNavigator. For detailed steps, please refer to *QNavigator\_User\_Guide*.

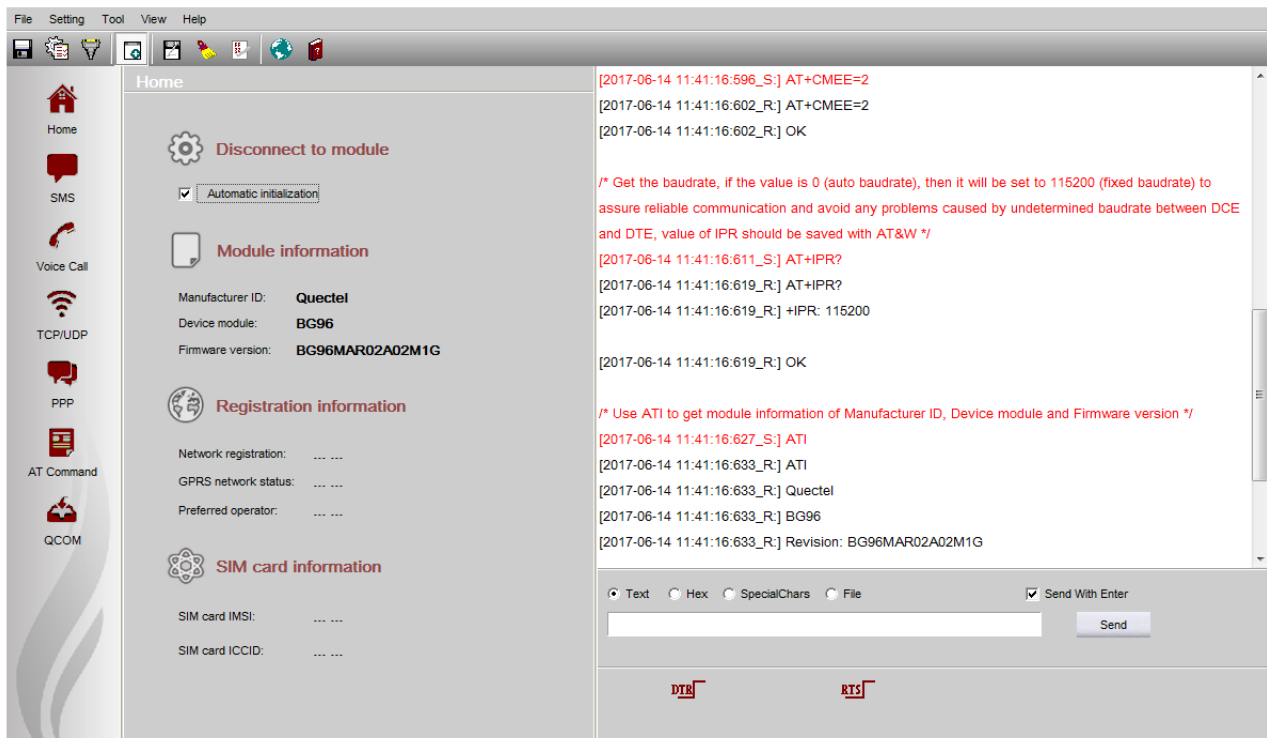


Figure 8: Module Testing via QNavigator (Take BG96 as an Example)

# 3 Uninstallation of USB Driver

This chapter mainly provides the way to uninstall USB driver for LTE and 5G modules. The uninstallation can be realized by re-operating installation package or adding/deleting program on “Control Panel”. By taking as an example, this document introduces using the latter method to uninstall the USB driver.

## 3.1. Uninstallation Procedures

### 1. Choose the Driver

Enter “Control Panel” and choose the installed driver, then click “**Uninstall**”, as shown below.

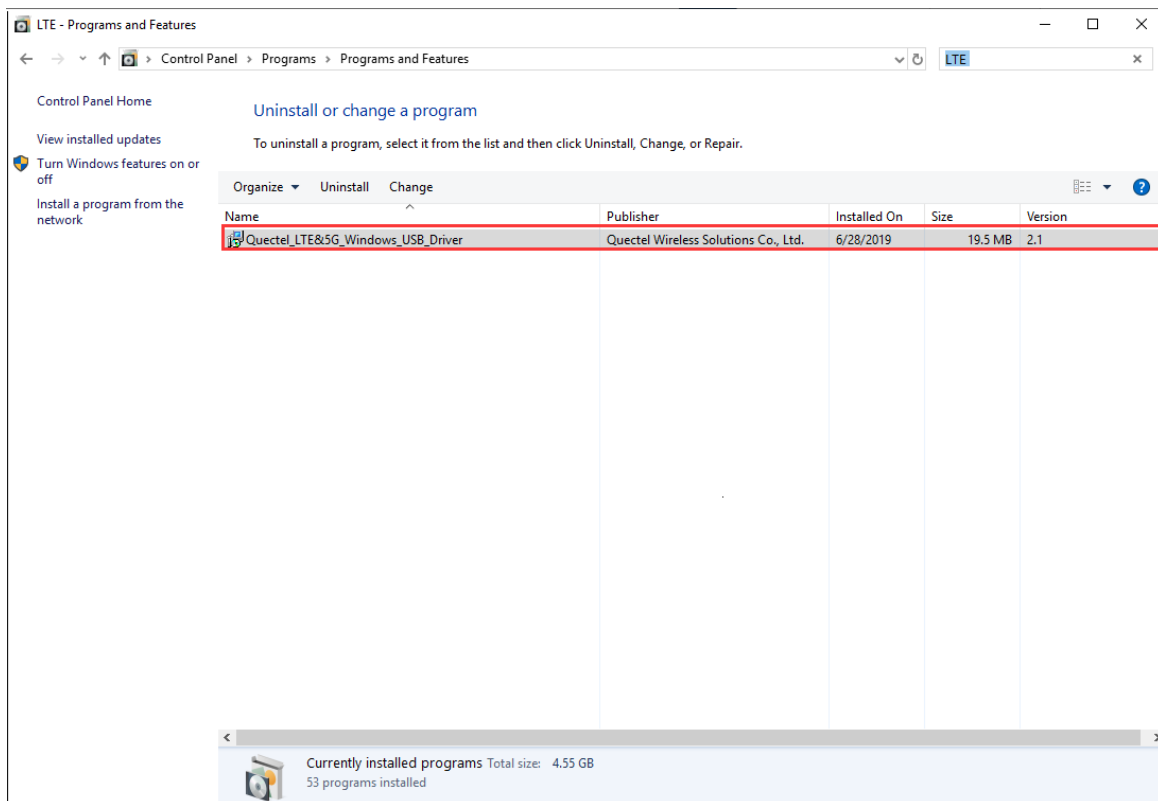


Figure 9: Choose the Installed USB Driver

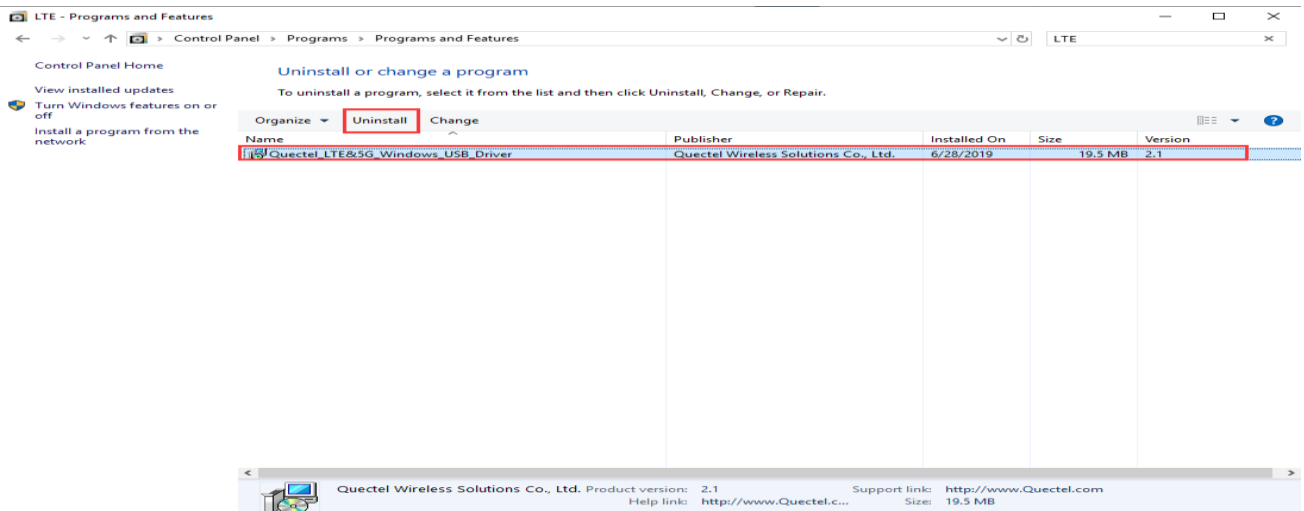


Figure 10: Uninstall the USB Driver

## 2. Check Uninstallation Setting

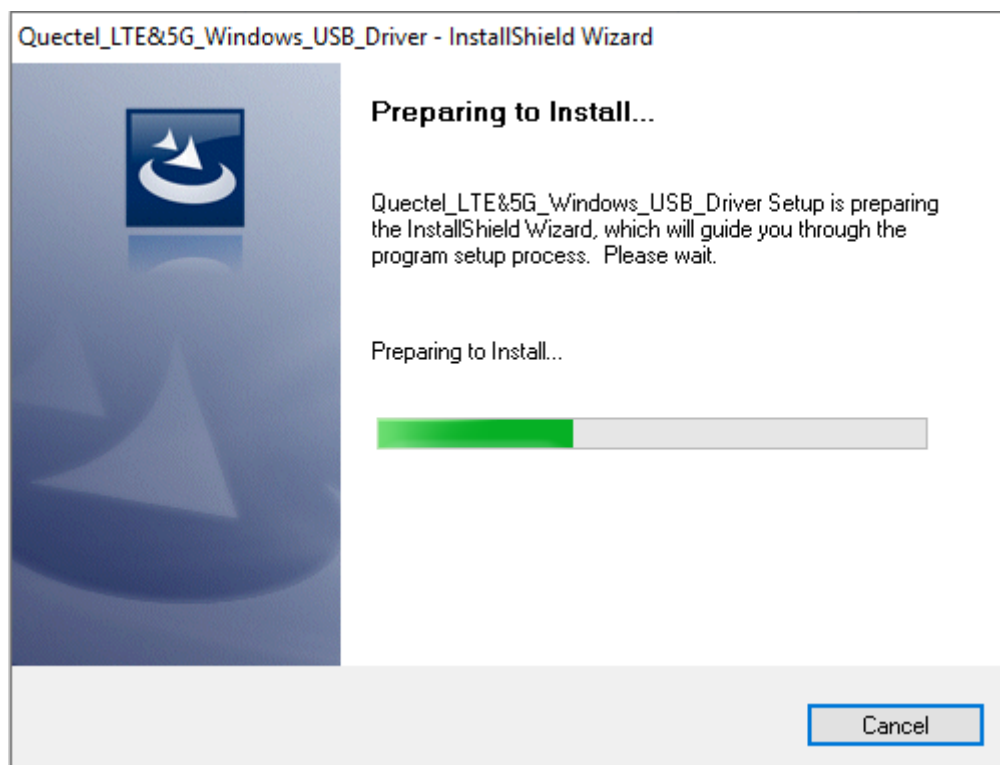


Figure 11: Check Uninstallation Setting



### 3. Confirm Uninstallation

Click “Yes” to confirm the uninstallation.

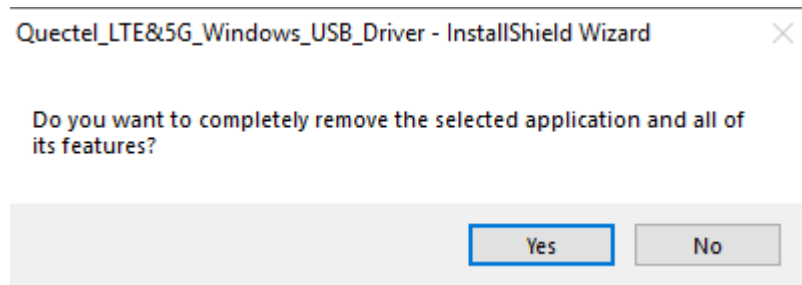


Figure 12: Confirm Uninstallation

### 4. Automatic Uninstallation

It may take some time to uninstall, please wait patiently for the process to complete.

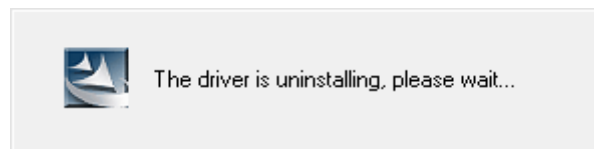


Figure 13: Automatic Uninstallation

Also please wait patiently during the installation files removing process as illustrated below.

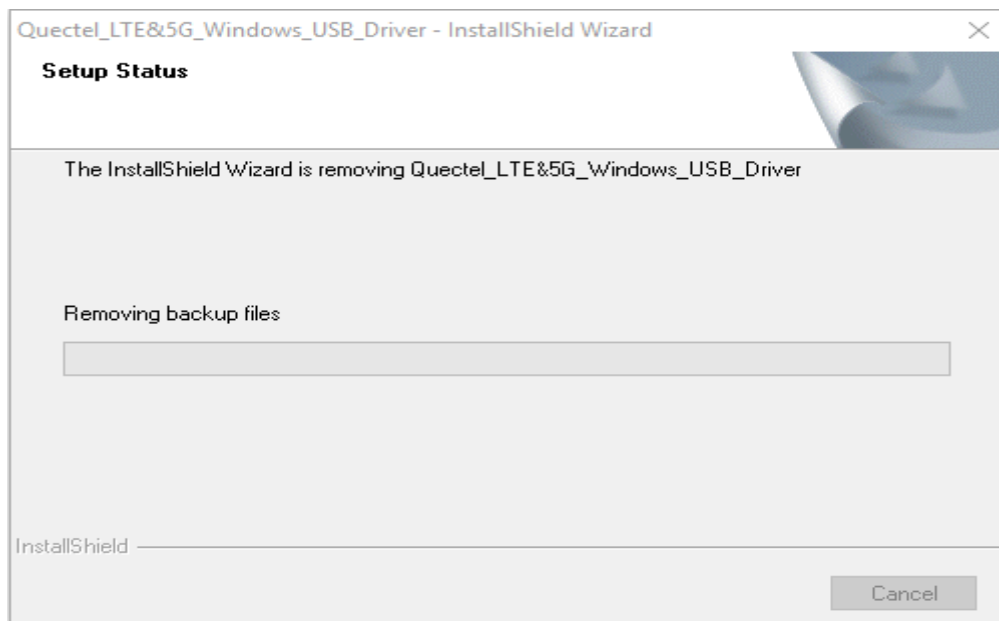


Figure 14: Removing Files

## 5. Complete Uninstallation

When the following interface is shown, it indicates the driver has been uninstalled successfully. Click **“Finish”** to complete uninstallation.

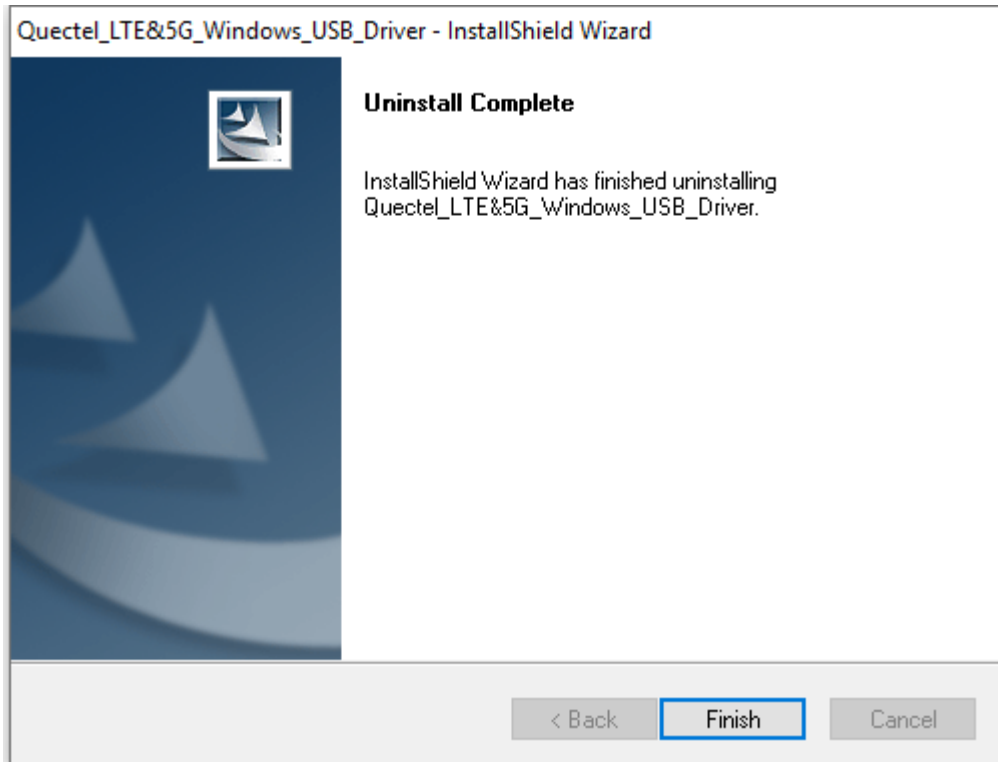


Figure 15: Complete Uninstallation

## 6. Check Uninstallation Result

After the USB driver has been uninstalled successfully, the device will switch to uninstalled status. Customers can check whether the driver has been uninstalled successfully or not through “Computer Management”, as illustrated below.

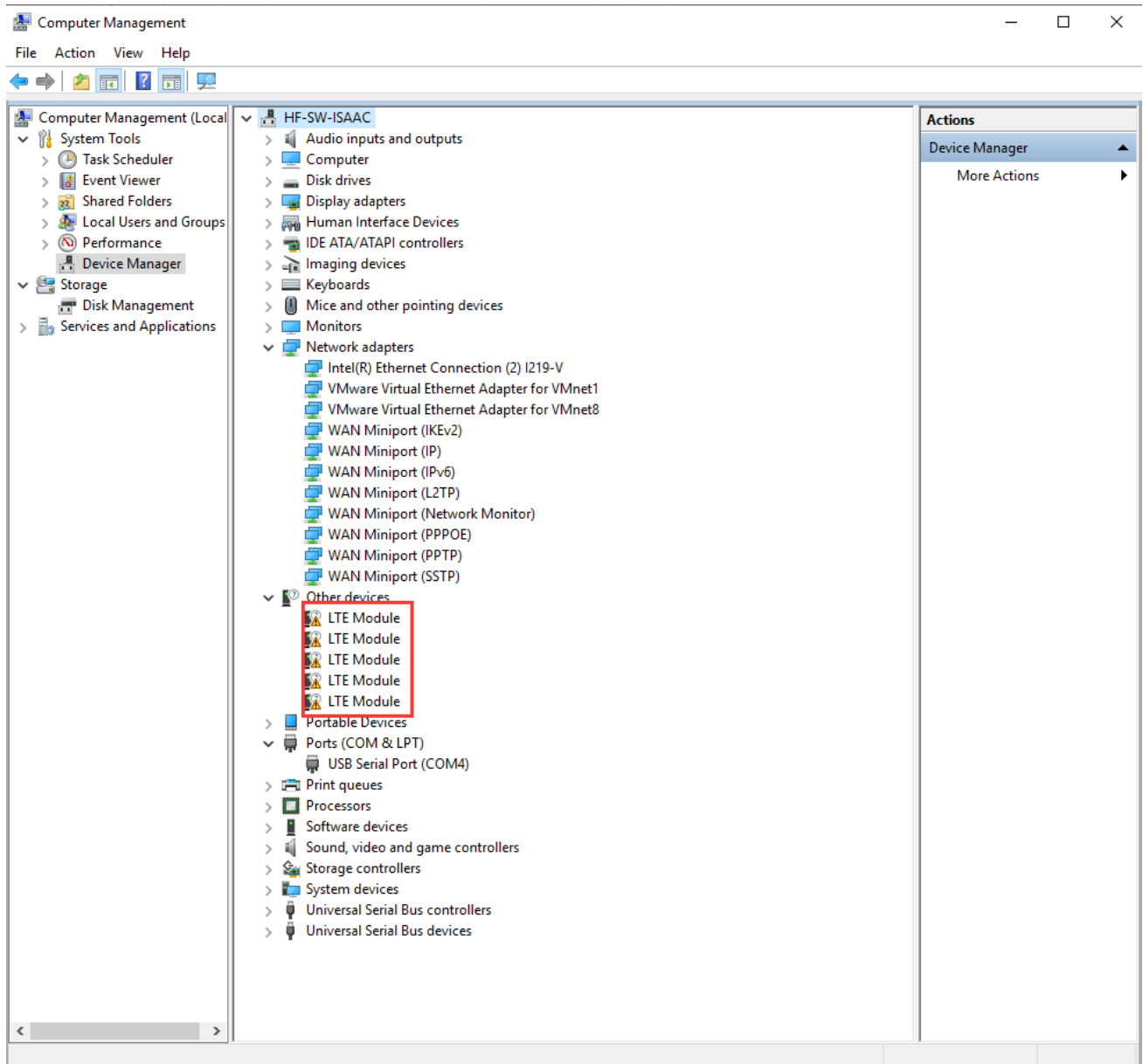


Figure 16: Check USB Driver Uninstallation Result