

TW-EAV510v2 PPTP with Win8 Client

PPTP with Win8 Client

Network topology:

[PPTP Server]TW-EAV510v2----Internet-----PC_B (Win 8)[PPTP Client]

TW-EAV510v2: WAN IP: 61.231.105.172

PC_B: 61.231.118.145

1. TW-EAV510v2 setting

On VPN>PPTP>PPTP Server:

- 1) Select WAN Interface
- 2) Auth. Type: MS-CHAPv2
- 3) IP Address assigned to Peer: 192.168.0.230

PPTP Server

Parameters

PPTP Function ☒ Enable ☐ Disable

WAN Interface pppoe_0_0_33/ppp0.1

Auth. Type MS-CHAPv2

Encryption Key Length Auto

Peer Encryption Mode Only Stateless

IP Addresses Assigned to Peer start from : 192.168.0.230

Idle Timeout 0 [0-120] Minute(s)

Exceptional Rule Group None

Apply Cancel

On VPN> VPN Account

- 1) Name:PPTPclient
- 2) Username/password=testi/testi
- 3) Connection Type: Remote Access

VPN Account

VPN Account applied to PPTP Server and L2TP Server.

Parameters

Name PPTPclient Tunnel ☒ Enable ☐ Disable

Username testi Password testi

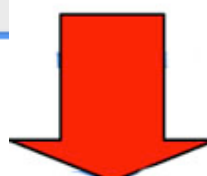
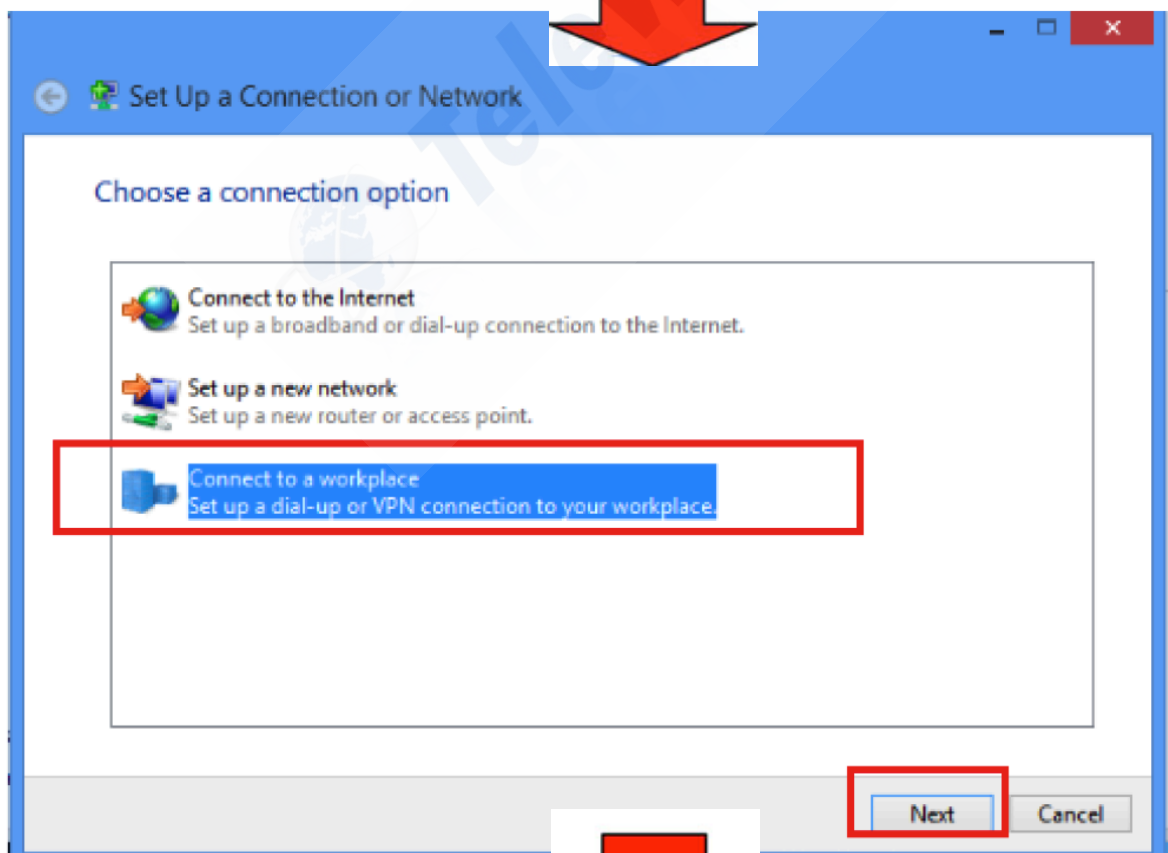
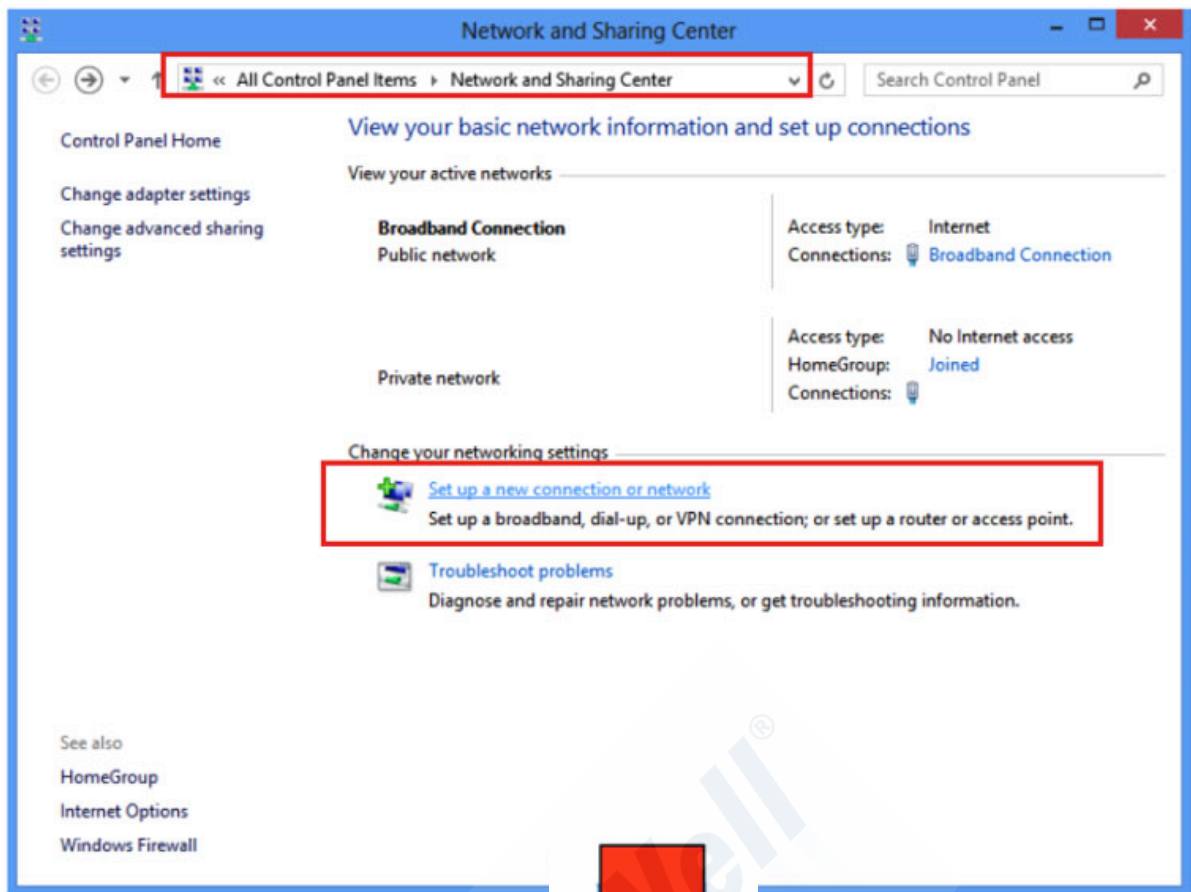
Connection Type ☒ Remote Access ☐ LAN to LAN

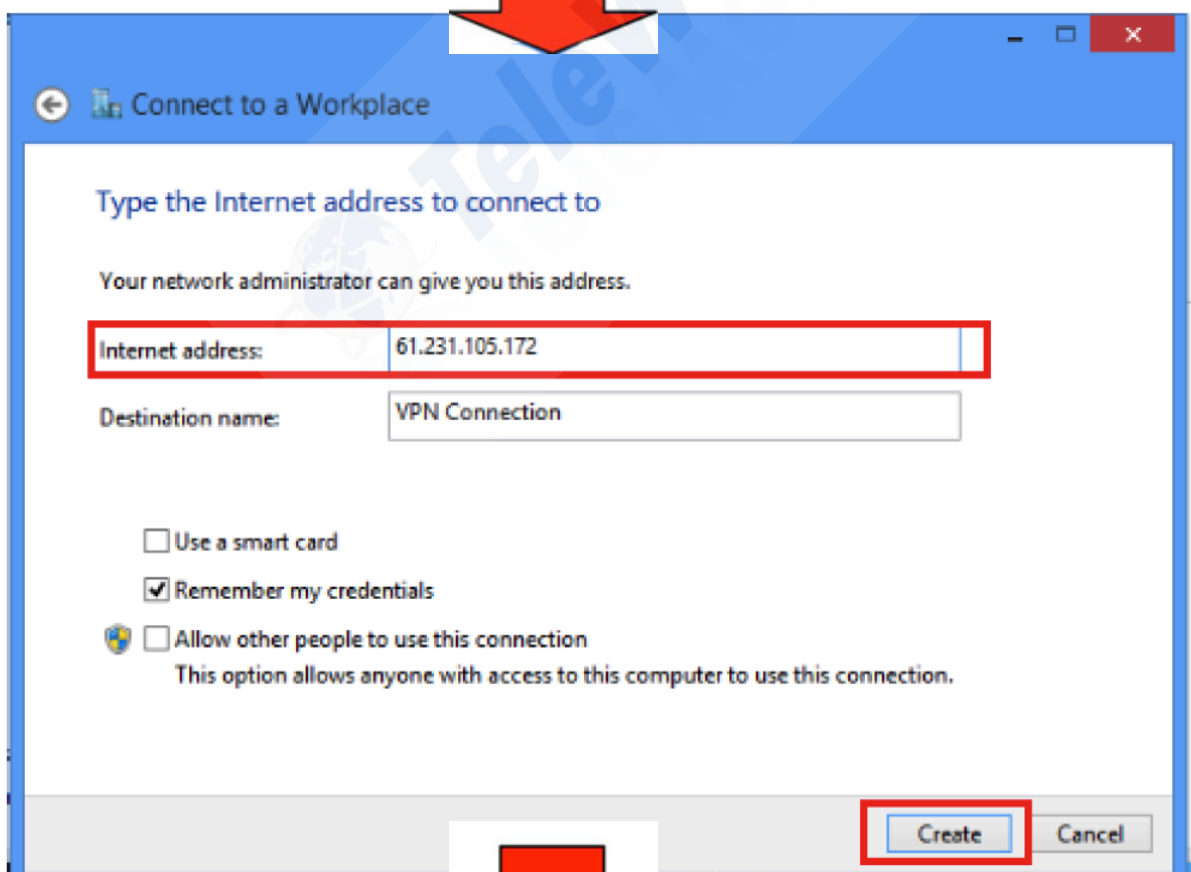
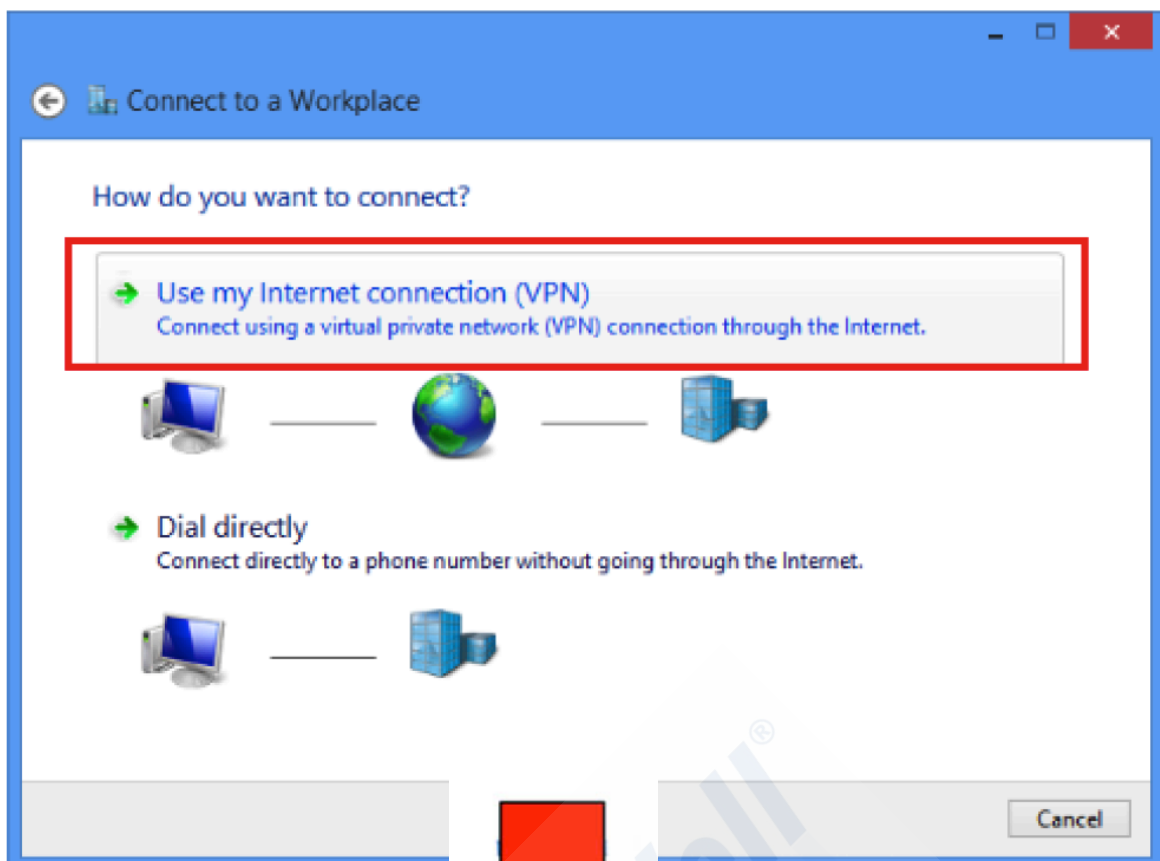
Peer Network IP Peer Netmask

Apply Cancel

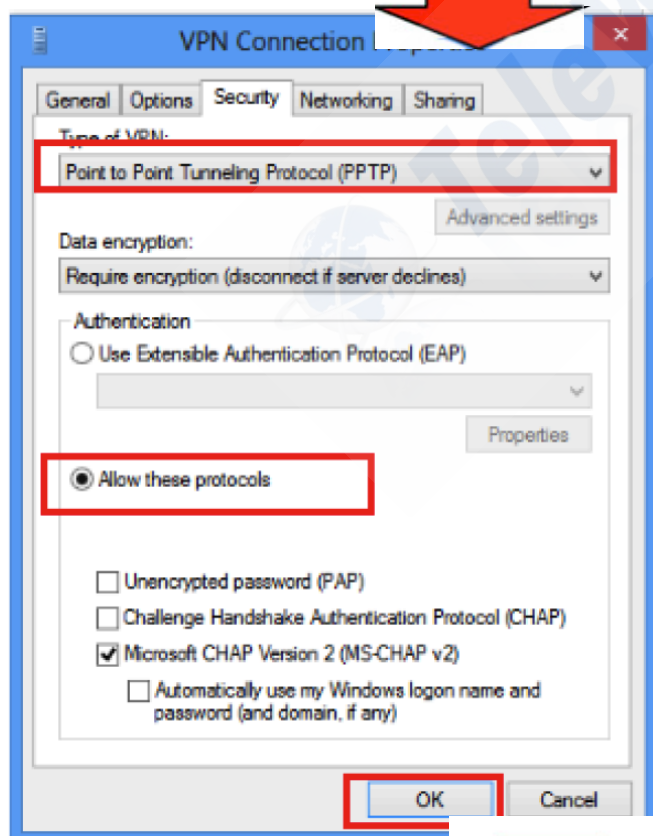
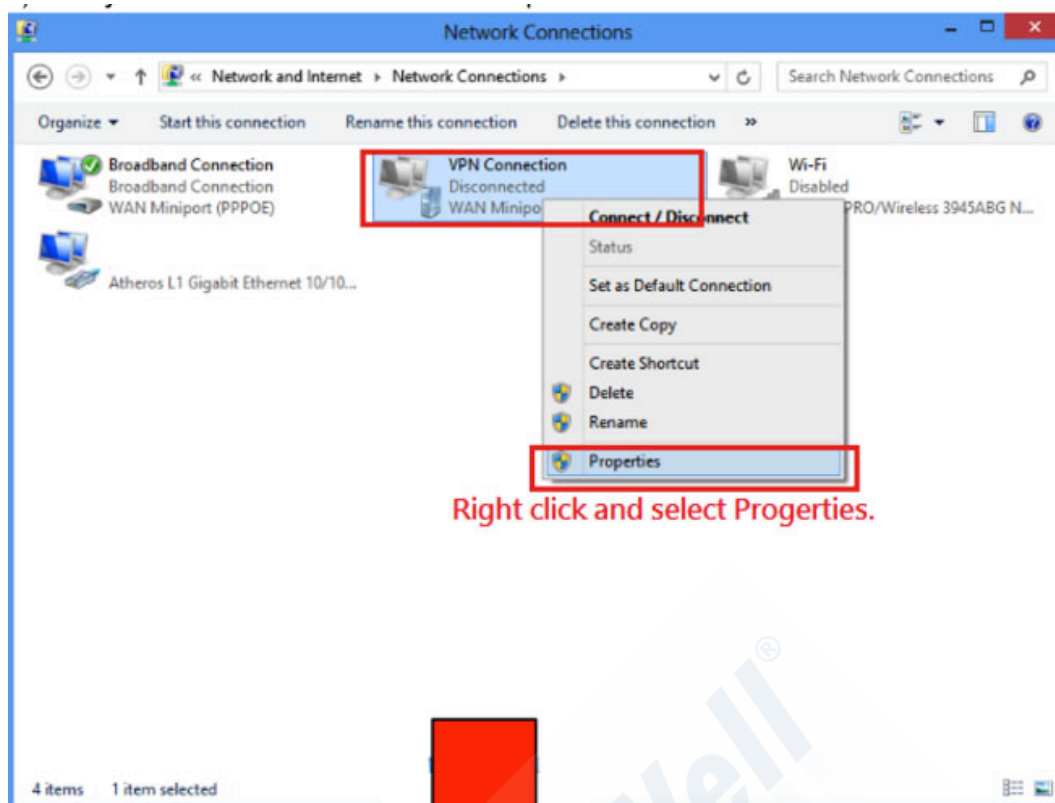
2. PC_B setting

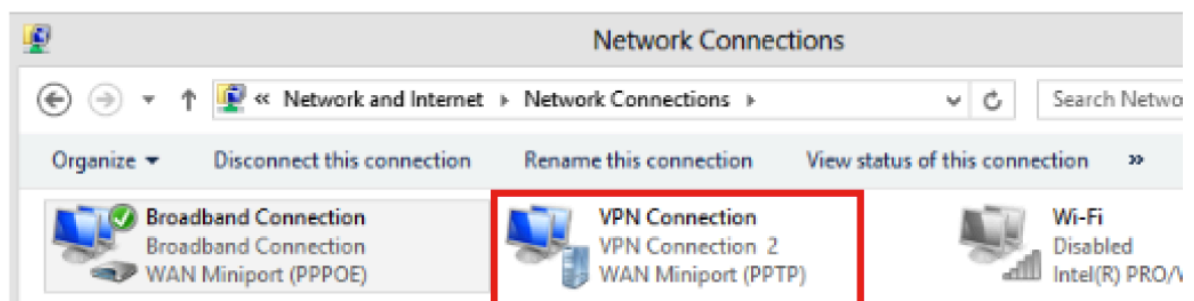
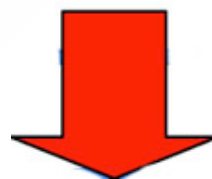
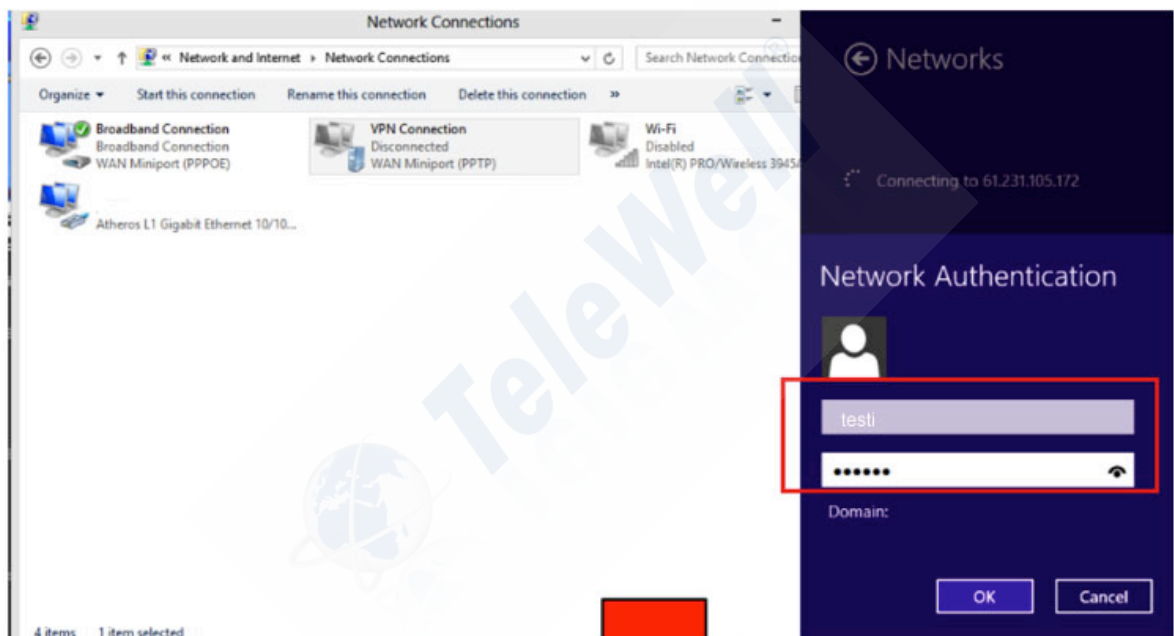
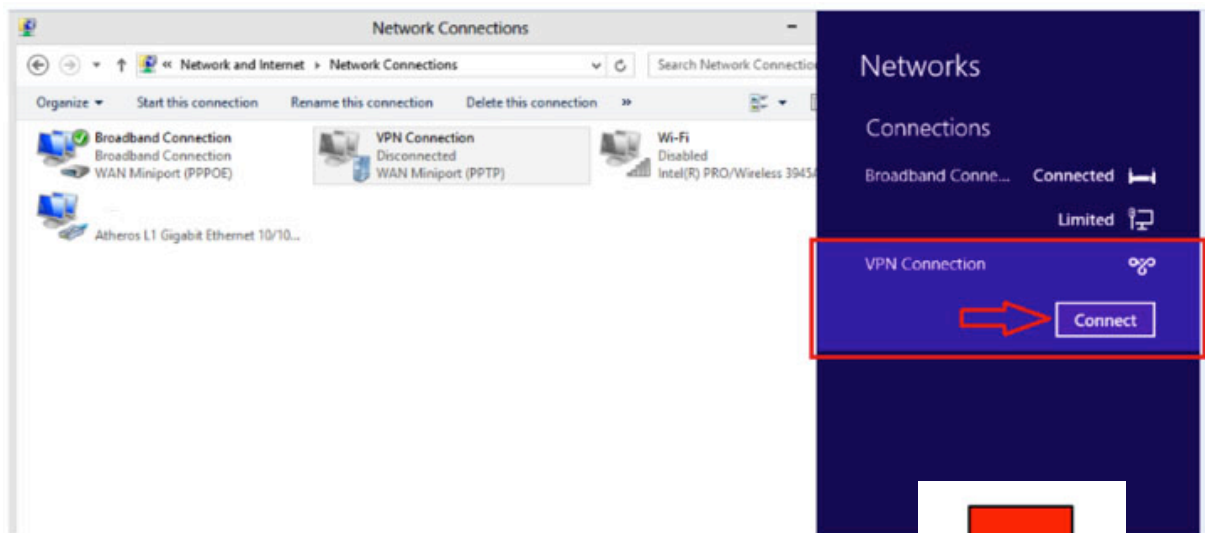
- 1) Set up a new connection.





4) Modify VPN connection and then dial up





```
Windows IP Configuration

PPP adapter UPN Connection:

    Connection-specific DNS Suffix  . : 
    IPv4 Address. . . . .           : 192.168.0.230
    Subnet Mask . . . . .           : 255.255.255.255
    Default Gateway . . . . .       : 0.0.0.0

PPP adapter Broadband Connection:

    Connection-specific DNS Suffix  . : 
    IPv4 Address. . . . .           : 61.231.118.55
    Subnet Mask . . . . .           : 255.255.255.255
    Default Gateway . . . . .       : 0.0.0.0
```

3. On TW-EAV510v2 PPTP status.
PPTPclient is connected as below.

PPTP Status						
PPTP Server						
Name	Enable	Status	Connection Type	Peer Network IP	Connect By	Action
PPTPclient	✓	Connected	Remote Access		61.231.118.55	Drop
PPTP Client						
Name	Enable	Status	Connection Type	Peer Network IP	Client IP	Action
Refresh						