

Platform:

MAC:OSX 10.7.5

TW-EAV510AC/LTE 2.50a.d39

Network topology:

TW-EAV510AC/LTE-----Internet-----(PPPoE)MAC_Book

TW-EAV510AC/LTE setting:

1. Set L2TP server over IPSEC

▼ L2TP Server	
Parameters	
L2TP	<input checked="" type="radio"/> Enable <input type="radio"/> Disable
WAN Interface	Default or IPsec Tunnel ▼ IPSec ▶
Auth. Type	Pap or Chap ▼
IP Addresses Assigned to Peer	start from : 192.168.10.220
Tunnel Authentication	<input type="checkbox"/>
Secret	<input type="text"/>
Remote Host Name	<input type="text"/>
Local Host Name	<input type="text"/>
Exceptional Rule Group	None ▼
<input type="button" value="Apply"/> <input type="button" value="Cancel"/>	

▼ IPsec	
IPsec Settings	
L2TP over IPsec	<input checked="" type="checkbox"/>
Connection Name	l2tpoveripsec
WAN Interface	Default ▼
IP Version	IPv4 ▼
Remote Security Gateway	<input type="text"/> <input checked="" type="checkbox"/> Anonymous
Key Exchange Method	IKE
IPsec Protocol	ESP
Pre-Shared Key	1234567890
<input type="button" value="Apply"/>	

2. Set account for Remote access

▼ VPN Account	
VPN Account applied to PPTP/L2TP/OpenVPN Server.	
Parameters	
Name	test
Username	louisie
Connection Type	<input checked="" type="radio"/> Remote Access <input type="radio"/> LAN to LAN
Peer Network IP	<input type="text"/>
Peer Netmask	<input type="text"/>
<input type="button" value="Add"/> <input type="button" value="Edit / Delete"/>	

On Mac_Book site:

1. Create L2TP over IPsec, input account and pre-shared key.

Select the interface and enter a name for the new service.

Interface: VPN

VPN Type: L2TP over IPSec

Service Name: VPN (L2TP) 2

Configuration Cancel Create

Network

Location: Automatic

Status: Not Connected

Configuration: Default

Server Address: 36.224.43.192

Account Name: louise

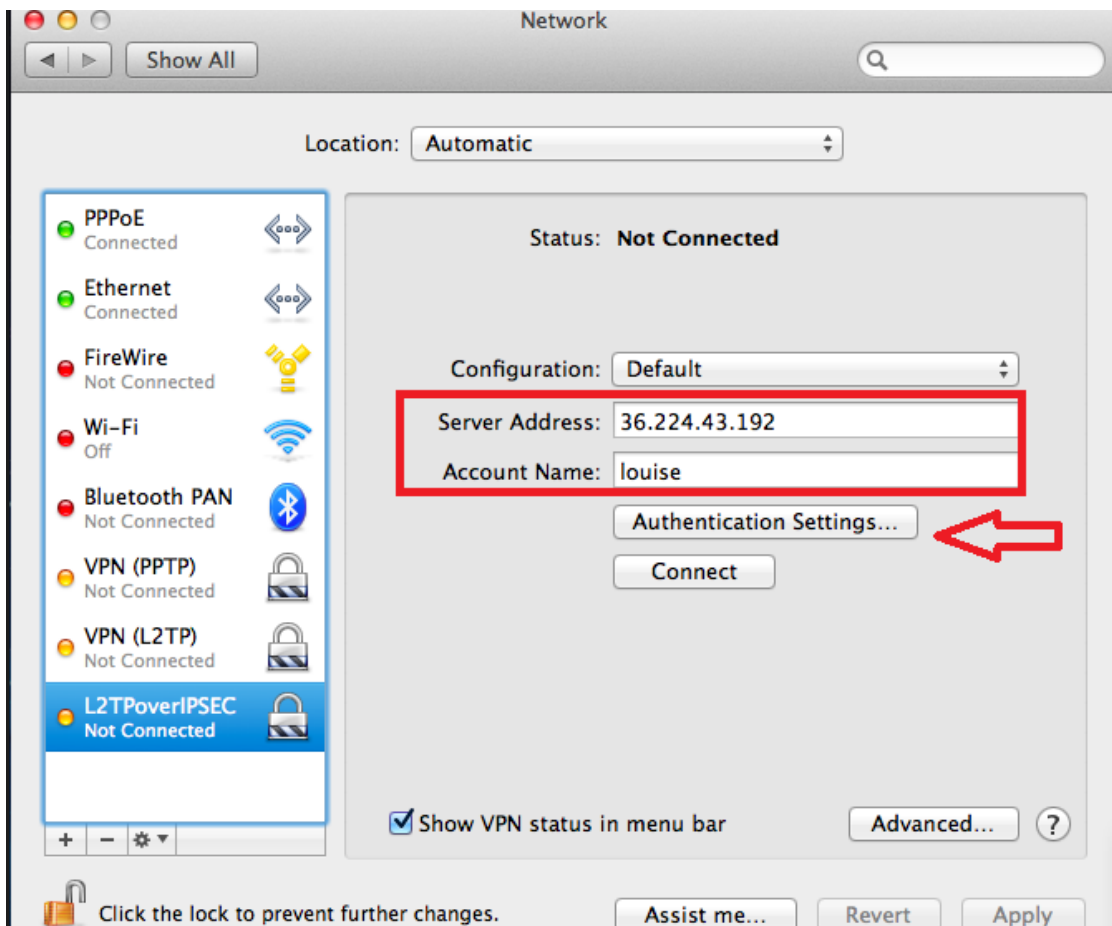
Authentication Settings...

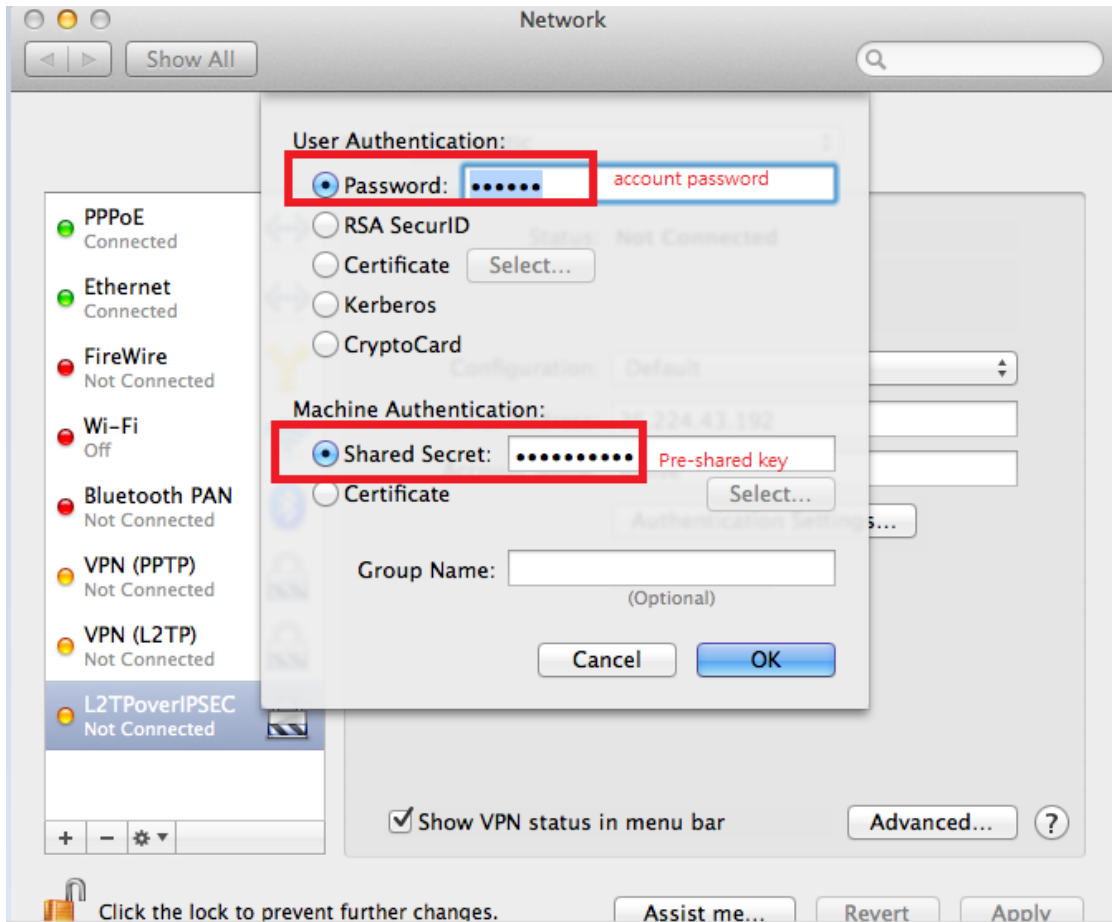
Connect

Show VPN status in menu bar

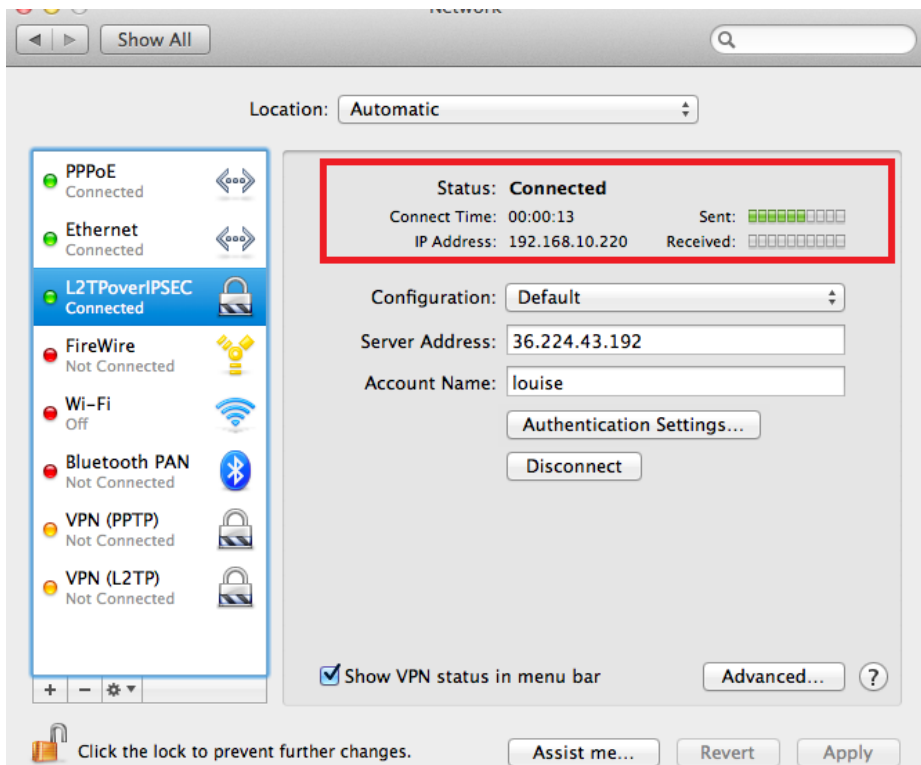
Advanced... ?

Click the lock to prevent further changes. Assist me... Revert Apply





2. Connect and will pop status when connection is success.



On Router: L2TP Status will show all connection.

The screenshot displays the L2TP Status configuration page on a router. The left sidebar shows the 'Status' menu expanded. The main content area is titled 'Status' and contains the following sections:

- L2TP Status** (highlighted with a red box):
 - L2TP Server** table:

Name	Enable	Status	Connection Type	Peer Network IP	Connect By	Action
test	✓	Connected	Remote Access		192.168.10.220	Drop
 - L2TP Client** table:

Name	Enable	Status	Connection Type	Peer Network IP	Client IP	Action
------	--------	--------	-----------------	-----------------	-----------	--------

A 'Refresh' button is located below the L2TP Client table.