

LTE MIMO-anten

Bi directional MIMO Antenna

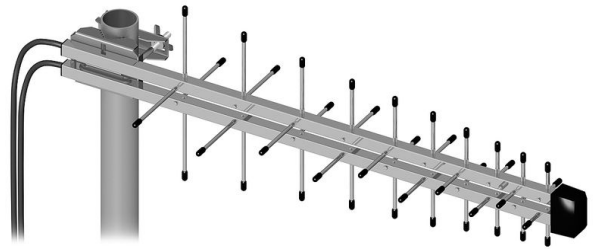
GSM/UMTS/3G/4G/WLAN/LTE

-Signal strength : 5dBi

-Cables : 2 x 10m + 2xSMAu

-Polarisation V+H

-Freguence: 800-2170 MHz GSM, DCS,
UMTS, LTE



Technical specifications